

**Fig. 5 ATC SCA R2 Remote Control Handset**

\* Further information below

## 6 : Remote Control Handset

The CDA2 Mk2 is supplied with an ATC SCA R2 remote handset. Provided that the CDA2 Mk2 is connected to the mains power and its rear panel power switch is on, the handset provides for remote operation of all functions.

The red indicator on the handset will flash as functions are operated. Failure of this indicator points to exhaustion of the handset battery. The battery should be replaced, and the old battery disposed of, by your local dealer or distributor.

Reliable operation of the remote handsets requires a direct line of sight between the handset and the unit front panel.

**Volume:** is controlled through the handset Level + and Level - buttons. The CDA2 Mk2 front panel level control will rotate in response to handset level commands.

**Step Input selection:** Each press of the Input button will select the next input. The input selected will be displayed in the Display window

**On/Reset:** This button is for use on other ATC equipment.

**Repeat track segment A - B:** The first press of the button marks the start of the track segment to be repeated. The Display will show A -. A second press of the button marks the finish of the track segment to be repeated. The Display will show A - B, and the track will be replayed continuously from A to B, unless Stop is pressed. A third press of the button will cancel A - B repeat.

**Standby:** The Standby button will place the complete unit in Standby. Standby is indicated by a Red LED illuminating above the Front panel Standby button.

**Display Dim:** Pressing the Dim button will brighten the display for a period of approximately 3 seconds. When the USB input is selected the Dim button will display the type of data (PCM or DSD) and upon a second press the sample rate will be displayed.

**Repeat Track:** The first press of the button will repeat the entire disc. RPT A will be shown in the Display.

A second press of the button will repeat the particular track selected. RPT B will be shown in the Display.

A further press of the button will cancel Repeat functions.

**Mute:** Pressing the Mute button will mute the output from the unit but not the headphones. The Mute LED above the Mute button will illuminate.

**CD Player Standby:** When the CD player Standby button is pressed, only the CD player will be placed in standby. Standby is shown in the Display window if CD input is selected, all other inputs function and display as normal.

When playing high resolution audio from any laptop/PC, all programs other than the audio playback software should be closed.

USB cables longer than 1m should be avoided.

A computer with a 2.7GHz Intel Core i5 CPU or equivalent and 4 GB RAM is recommended, particularly for playback of DSD content and PCM files with high samples rates.

### Supported Operating Systems

**Windows 7, 8 and 10:** Windows 7 is recommended for best performance when using Microsoft Windows.

Specific drivers are required for high resolution audio playback over USB2.0. Please download the appropriate driver from the CDA2 Mk2 product page on the ATC website:

**Mac OS X El Capitan and above:** No driver is required when using Mac OS X. For best performance Mac OS X El Capitan is recommended.

### Recommended Audio Playback Software

Choice of playback software in both Mac OS X and Windows is vast. The CDA2 Mk2 was developed and tested with JRiver Media Centre 22 on both Mac OS X and Windows 7 operating systems and it is recommended that for best performance this version of JRiver is used.

It is critical for best performance that JRiver MC22 is set as per **Figs. 6 - 9** (Windows) and **Figs. 10 - 12** (Mac).

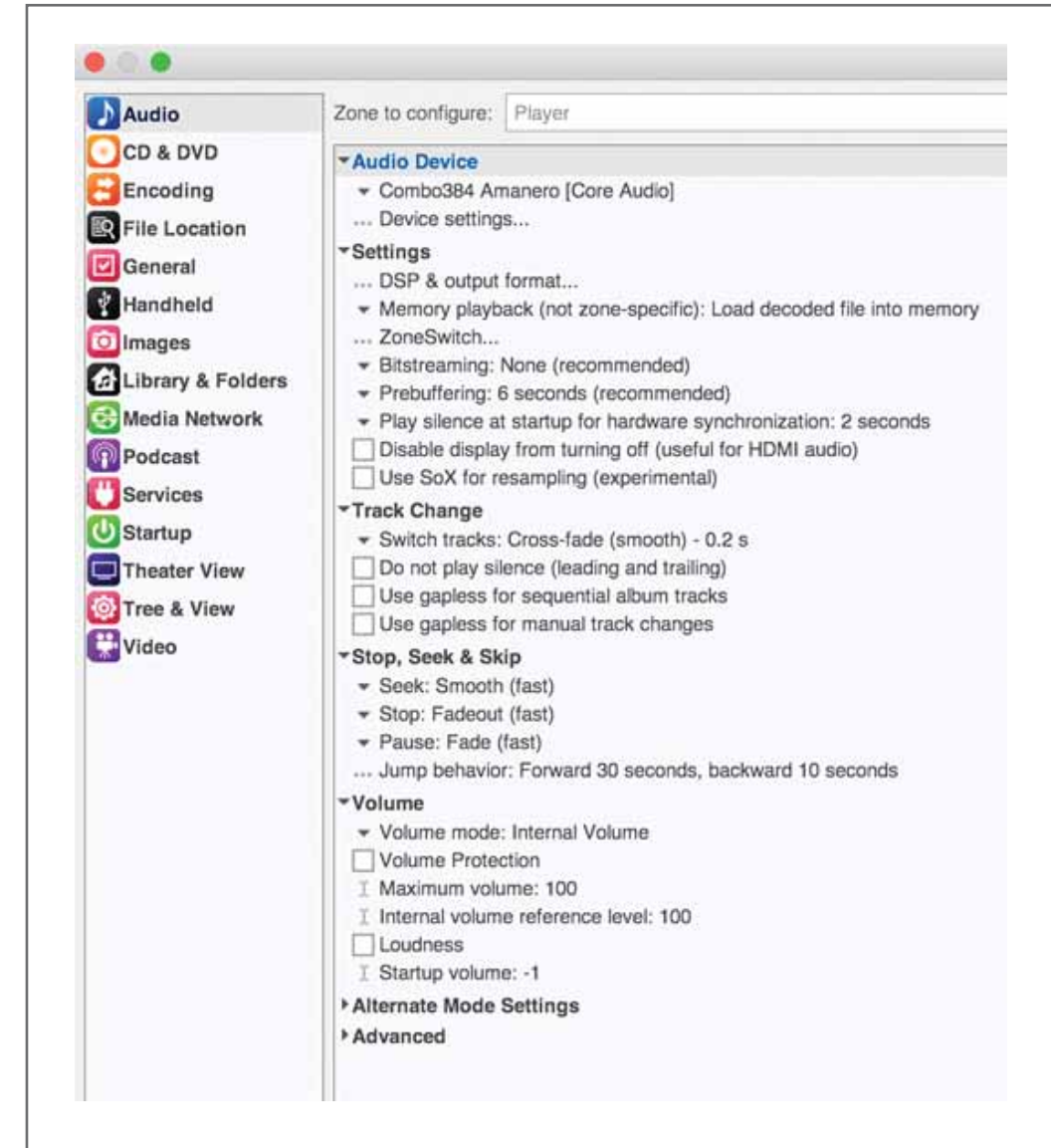
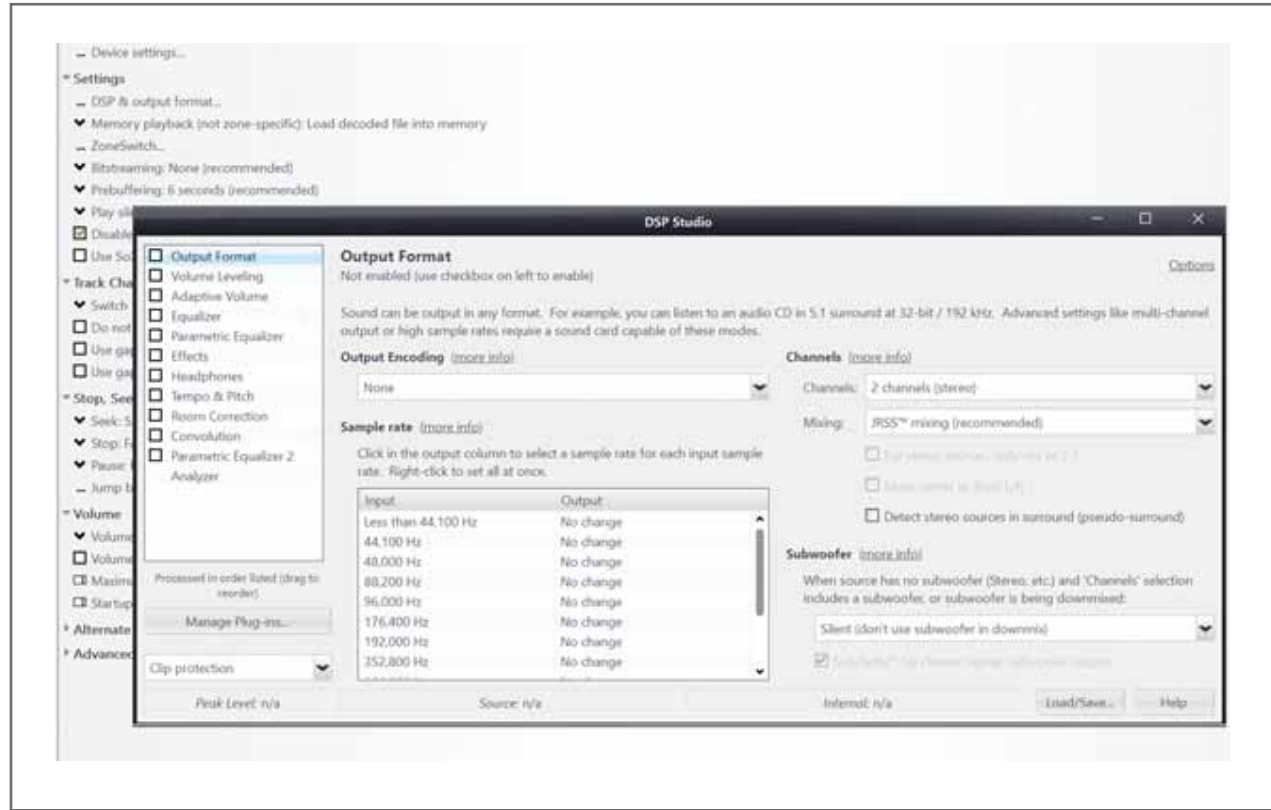


Fig. 6 JRiver MC 22 settings in Windows

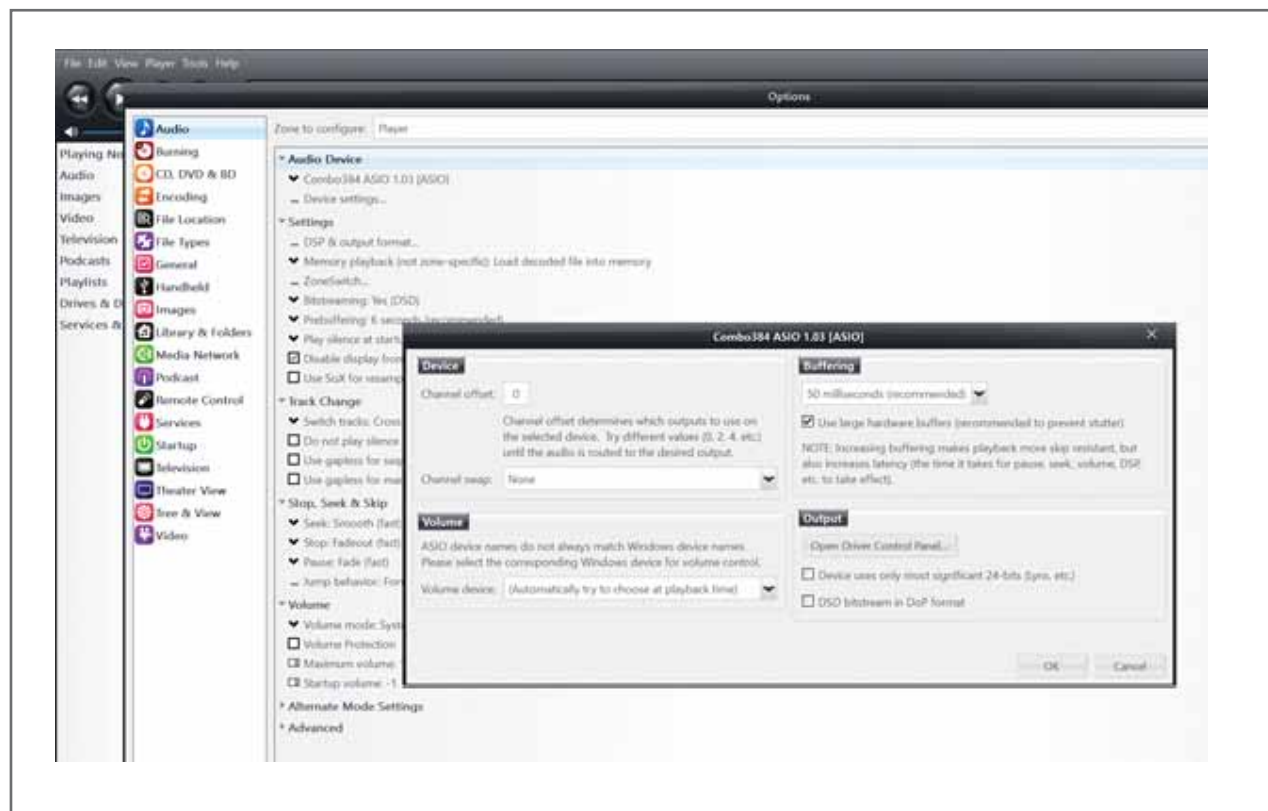




**Fig. 7 JRiver MC 22 settings – Windows:**  
 Disabling “Output Format” will ensure the files reach the CDA2 Mk2 without conversion in JRiver



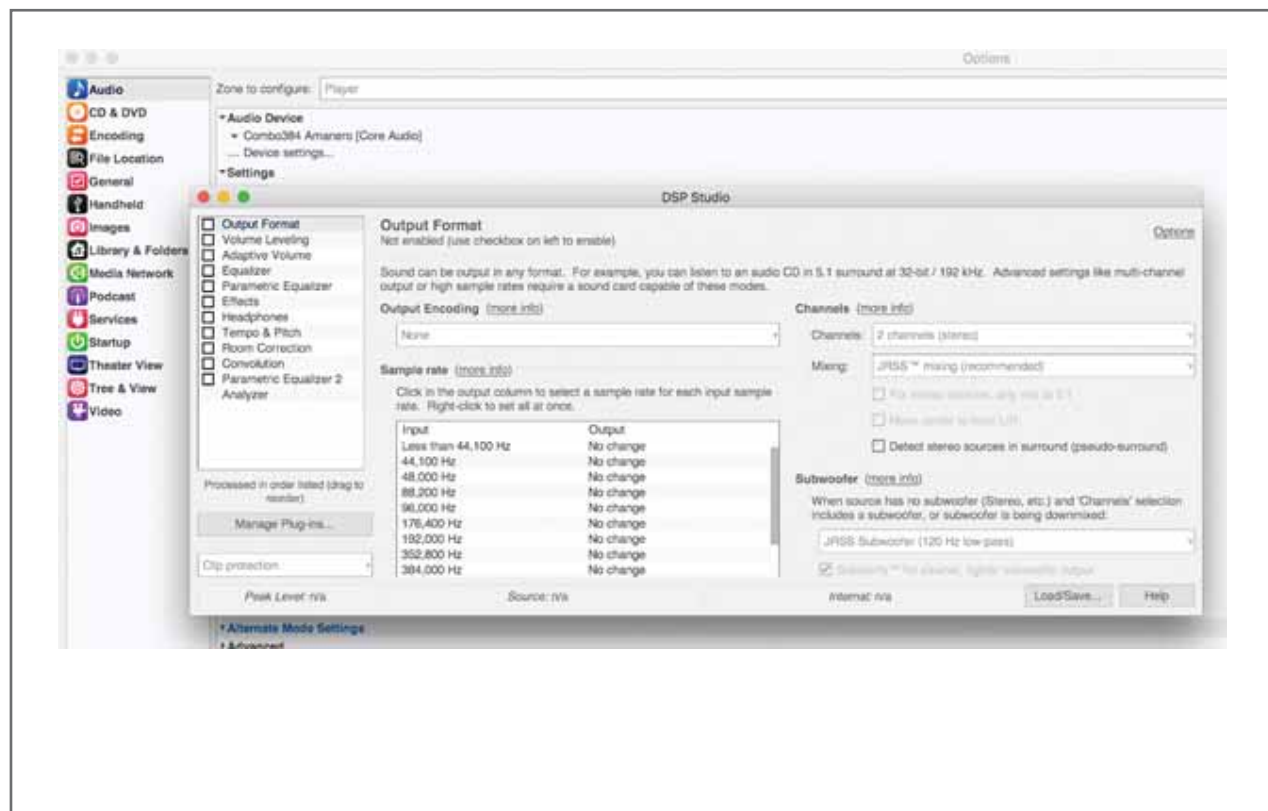
**Fig. 8 JRiver MC 22 settings – Windows:**  
 When playing DSD files, “Bitstreaming” should be set to “Yes(DSD)”



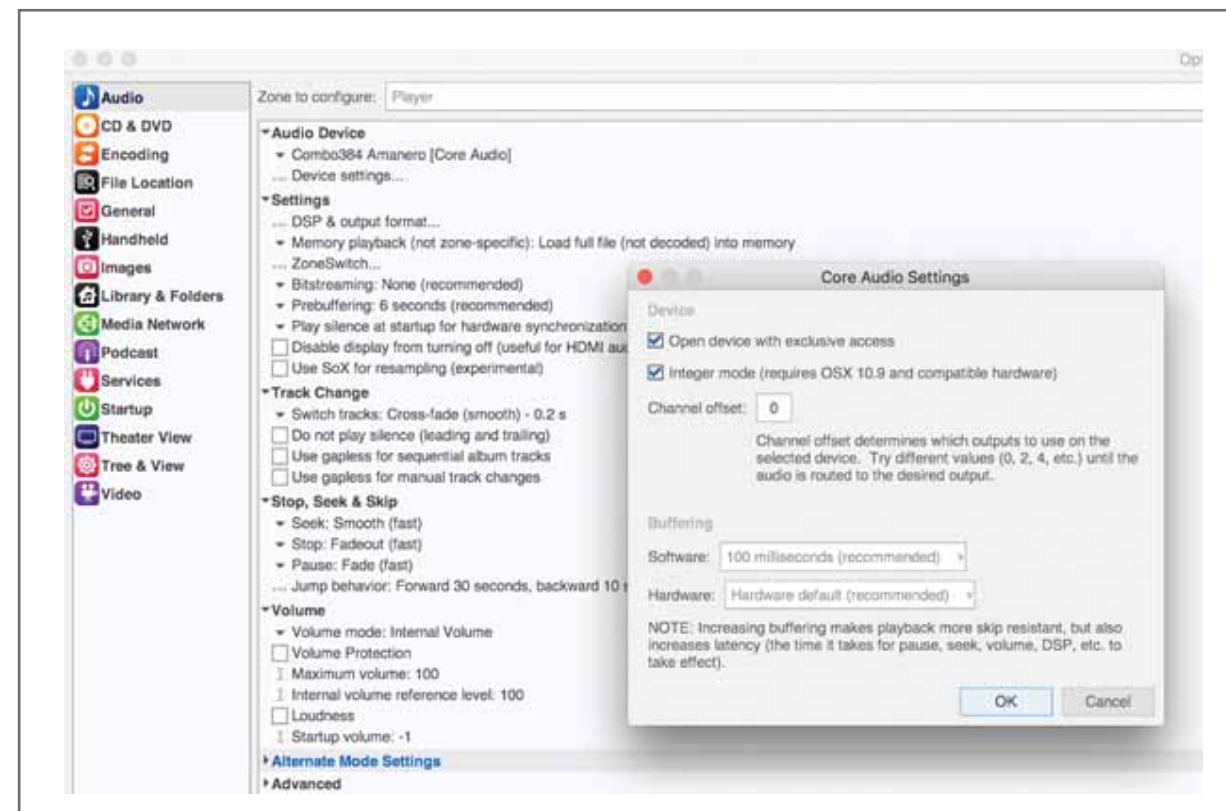
**Fig. 9 JRiver MC 22 settings – Windows:**  
When playing DSD files, “Device Settings” should be as shown as above



**Fig. 10 JRiver MC 22 settings in Mac OS X**



**Fig. 11 JRiver MC 22 settings – Mac OS X:**  
Disabling “Output Format” will ensure the files reach the CDA2 Mk2 without conversion in JRiver



**Fig. 12 JRiver MC 22 settings – Mac OS X:**  
When playing DSD files, “Bitstreaming” should be set to “Yes(DSD)”

## 8 : Specifications

### PRE-AMPLIFIER

**Frequency Response (-3dB)** < 2 Hz - > 280 kHz

**Distortion (1kHz)** <0.0008% / 102dB

#### Input sensitivity for 2V Output:

**Aux inputs** 600mV

**3.5mm inputs** 400mV

#### Maximum Output Level:

**Phono** 9.2V r.m.s

**XLR** 18.4V r.m.s.

**Overload Capacity** 13dB

**Input Impedance** 14k Ohms

**Output Impedance** 10 Ohms

#### S+N/N Ratio:

**Wide Band** >96dB

**DIN** >108dB

**IEC “A”** >112dB

#### Absolute Phase:

**Phono** Zero Degrees

**XLR** Zero Degrees, Pin 2 Hot

**Output XLR CMRR (100Hz - 10kHz)** >60dB

### CD PLAYER

#### Distortion:

**1kHz** < 0.0015% (-96dB)

**10kHz** < 0.003% (-90dB)

**Frequency Response (20Hz-20kHz)** +/- 0.2dB

### DIGITAL INPUTS Optical and Coaxial

**Distortion** <0.001% at all supported sample rates  
44.1kHz, 48.0kHz, 88.2kHz, 96.0kHz, 192.0kHz\*  
\* 192kHz supported via coaxial input only

### DIGITAL INPUTS USB

**Distortion** <0.001% at all supported sample rates  
44.1kHz, 48.0kHz, 88.2kHz, 96.0kHz, 176.4kHz,  
192.0kHz, 352.8kHz, 384kHz

### SUPPORTED WORDLENGTHS

**Optical and Coaxial :** 16bit and 24bit

**USB :** 16bit, 24bit and 32bit

### DSD

**Frequency Response -1dB :** < 10Hz – 50kHz

#### Supported DSD Rates :

**Windows** DSD64, DSD128 and DSD256

**MacOS** DSD64 and DSD128

### PHYSICAL

**Dimensions (HxWxD) :** 90 x 445 x 330mm (3.5" x 17.5" x 13")

**Weight :** 7kg / 15.4lbs

## 9 : Care & Maintenance

ATC uses high technology material finishes in all of its products. The surfaces are durable and with a little care can be kept as good as new even under conditions of heavy use. Normally a dry duster is all that is required to keep the finishes clean. Heavy soiling can be cleaned using a slightly moistened cloth with a non-abrasive household cleaner.

## I 0 : Warranty & Contact

All ATC products are guaranteed against any defect in materials or workmanship for a period of two years from the date of purchase.

Within this period we will supply replacement parts free of charge provided that the failure was not caused by misuse, accident or negligence.

Purchasers who complete and return the Warranty Card will have their warranty period extended up to a period of six years\* from the date of purchase.

\* TWO years only on CD mechanism.

This guarantee does not limit statutory rights.



**Loudspeaker Technology Ltd** Gypsy Lane, Aston Down, Stroud, Gloucestershire GL6 8HR United Kingdom

**Telephone** +44 (0)1285 760561 **Fax** +44 (0)1285 760683

**Email:** [info@atc.gb.net](mailto:info@atc.gb.net) **Website:** [www.atcloudspeakers.co.uk](http://www.atcloudspeakers.co.uk)

**Acoustic Transducer Company** is the trading name and  is the registered trade mark of Loudspeaker Technology Ltd.